



"An important message for us all"



"So much joy and warmth!"



"Beautiful show"

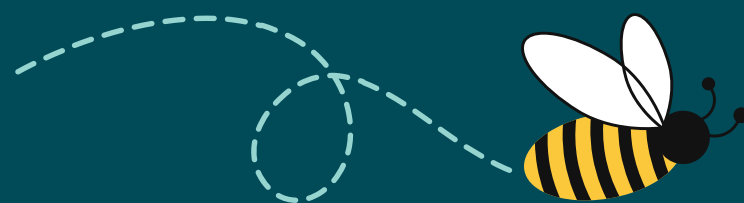
Presents:



'This Tree Belongs to Me!'



There's going to be a party in the Garden and everyone is invited; only problem is, there's one creature who is less than welcoming.



A fun packed interactive show exploring the value of inclusivity as well as the importance of nature in our surroundings.



The Production:

It's a very, VERY special day in the Story Craft Garden. The creatures are all meeting by the great tree for a party...it's going to be huge and everyone is invited, including you! The only problem is, there is one owl who is less than welcoming, especially towards anyone who looks different from him!

This highly visual show integrates Makaton sign language throughout and is packed full of enchanting puppetry, colourful characters, games, music and lots of interactive fun exploring the value of inclusivity as well as the importance of nature in our surroundings.

Aimed at 3+

A show packed full of clever puppetry, colourful characters, games and interactive fun for all the family.

The Company:

Story Craft Theatre is an award winning children's theatre company based in York run by professional actors and theatre-makers Cassie Vallance and Janet Bruce.

"Our aim has always been to produce engaging storytelling experiences for big and little folk."

The company began in 2018 when they started hosting a preschool class at York Theatre Royal. Within a year this had grown to running storytelling classes, parties, shows and events across Yorkshire and further afield. Over the last 5 years they they have built up partnerships with numerous organisations including Castle Howard, Kiplin Hall, York Theatre Royal, York Museum trust.

www.storycrafttheatre.co.uk

**"Really clever
and inventive.
We all loved it!"**



Creative Team



Janet Bruce - Director

Janet graduated from East 15 Acting School where she received a Bachelor of Arts in Acting in 2006.

After leaving Drama School her first acting job was a National Tour with Box Clever. It was here she fell in love with Children's Theatre.

She then went to work with Badac Theatre Company and was nominated for several awards including The Stages' Best Actor Award for her performance in The Factory.

Whilst living in London Janet performed in Sweeney Todd in the West End and was also part of the remembrance performance at Westminster Abbey.

Janet has collaborated on large scale Street Theatre, Promenade, Immersive theatre productions including The Rugby World Cup and London Olympics 2012.

Janet spent several years touring the world before moving back to England and starting Story Craft Theatre with Cassie.



Cassie Vallance- Director

Cassie trained at the Royal Scottish Conservatoire where she received a Bachelor of Arts in Acting in 2003.

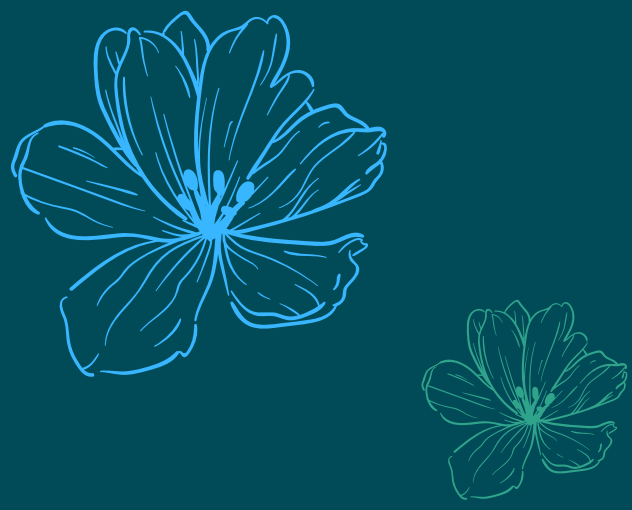
Soon afterwards she moved to London where she was part of Company of Shadows; a group that created sight specific immersive community lead shows.

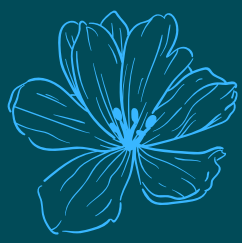
She has worked with The Royal Opera House also creating site specific community theatre and she co-created and performed Barren at The Lost One Act Theatre Festival, receiving a special prize for merit.

She has performed in numerous family shows including Stick Man Live on Stage in the West End and International Tour with Scamp Theatre. The Storm Whale at York Theatre Royal and Teddy Bears' Picnic both with Engine House Theatre; the latter she co-created as part of the Park Bench Theatre season held at Rowntree Park.

Cassie was also part of The Shakespeare Rose Theatre, where she performed in Hamlet and Twelfth Night. Also as Martha Wright in Guy Fawkes at YTR.

Her Television credits include Emmerdale, Brassic, Coronation Street, The Syndicate, Hollyoaks.





Production info:

Production time: 30, 45 or 60 mins

Get in: 30-45 mins **Get out:** 30-45 mins

Space required: minimum of 8ftx8ft

Lighting: Venue dependant. Can be basic wash.

Sound: Speaker and mics supplied by SCT. All electrical devices less than two years old. No power point required.

Cast and crew: Two performers also operating sound.

Prop & Set: 8ft cardboard tree that comes apart, 1 rug, container of costume.

Audience seating:

Show can work in non-traditional settings. Happy to work with what the venue has to offer. We also appreciate that younger audiences may benefit from being on the ground. In these cases suitable mats/cushions/lower seats would need to be provided by the venue.

Wrap around:

Craft making and colouring in can be provided at an additional cost.

Marketing:

We have an established audience in York as well as further across North Yorkshire. Social Media sites can be seen on links below.

Instagram

<https://instagram.com/storycrafttheatre/>

Facebook

<https://www.facebook.com/storycrafttheatre/>

Contact:

hello@storycrafttheatre.co.uk

07783 657963

"We all loved how magical and fun the whole thing was."

